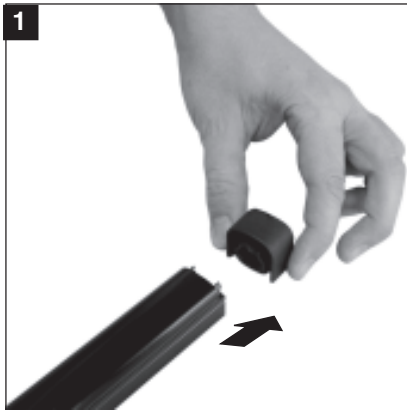
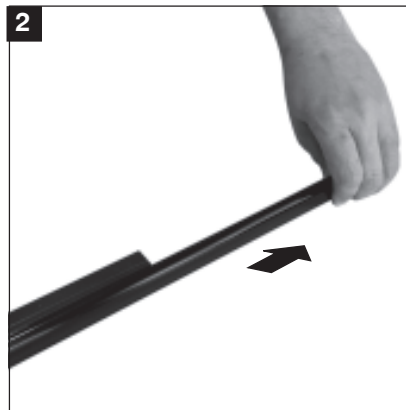


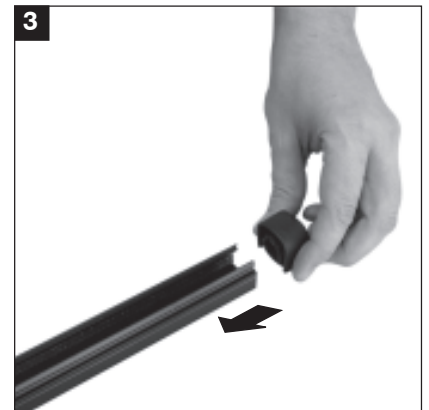
WSA BARRIER ASSEMBLY OPERATIONS



▲ Remove the upper stopper.



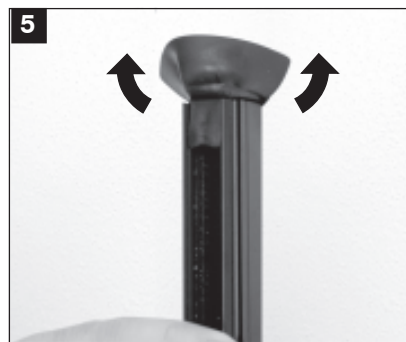
▲ Remove the perpex from the aluminium guide.



▲ Re-insert the stopper removed in operation "1".



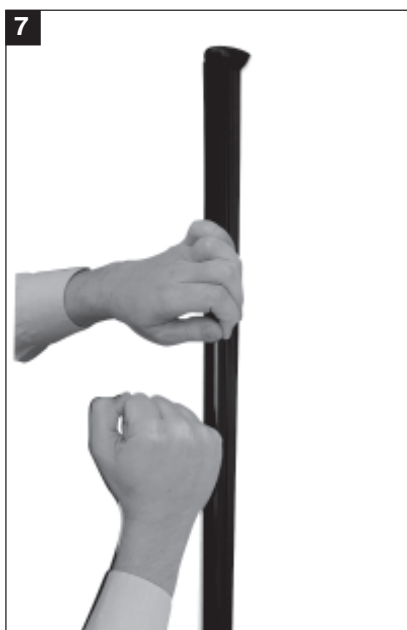
▲ Mark out, drill and fasten the aluminium section bar to the wall.



▲ Rovesciare il tappo in gomma superiore, evitando di sfilarlo dal profilato. / Turn over the upper rubber stopper, without removing it from the section bar.



▲ Couple the perpex in the lower part of the section bar and just above the lower rubber stopper.



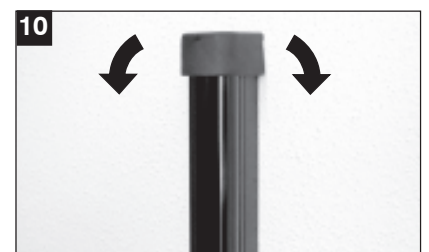
▲ Push the perpex to the bottom along its entire length, into the section bar guide.



▲ Press the perpex into the guides up to the end of the section bar.

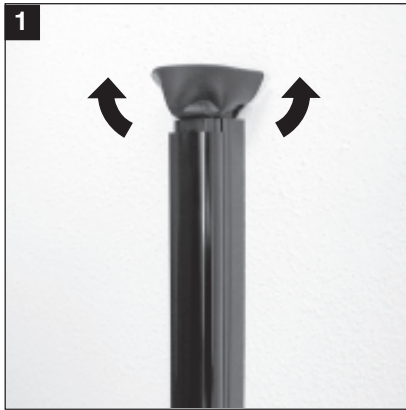


▲ Slide the perpex until the lower part is inserted into the lower stopper.

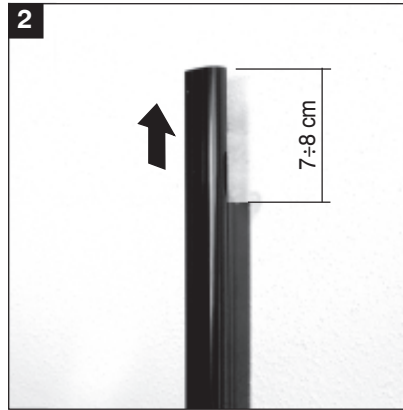


▲ Turn the upper stopper back to its original position to close the section bar.

WSA BARRIER DISASSEMBLY OPERATIONS



▲
Turn over the upper rubber stopper, without removing it from the section bar.



▲
Remove the perspex approximately 7-8 cm from the upper part.



▲
Uncouple the perspex from the upper part of the section bar.



▲
With a slow, constant movement, uncouple the entire length of the perspex from the section bar.